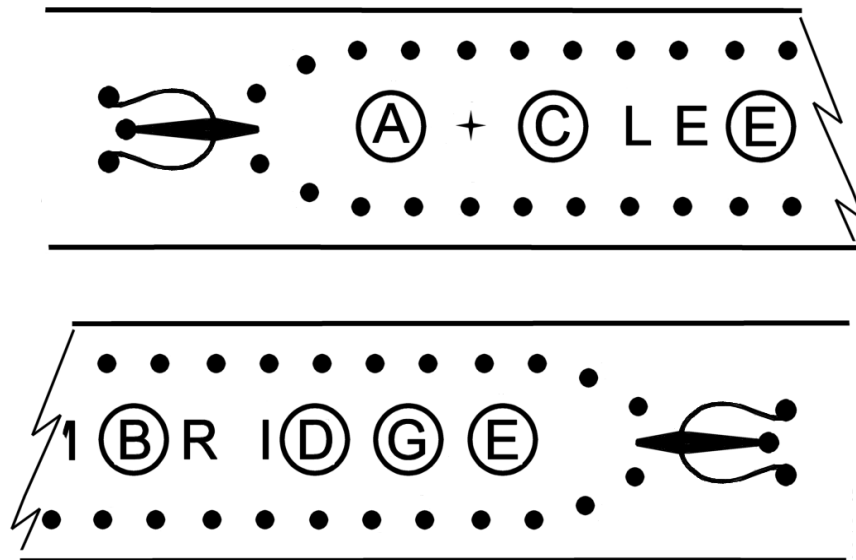


Marked clay pipe stem from Wimpole 2011

Finding clay pipe stems with maker's names is fairly unusual but one stem recovered at Wimpole included a maker's name and some fluted decoration near one end. The maker's name was in relief, indicating the decoration had been incorporated into the pipe mould. Some characters were worn but the illustration below shows the main features that can be determined or estimated by examination under the appropriate lighting conditions.

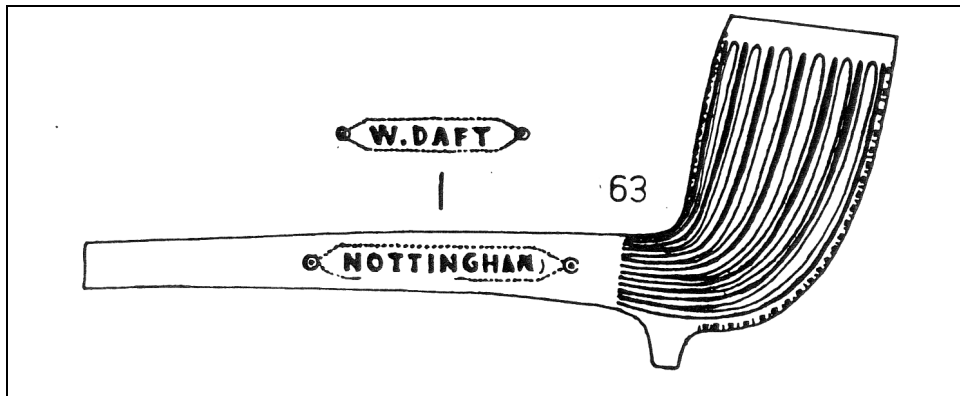


The letters in circles are ones that can be determined with some degree of confidence, the other letters are estimates of worn characters. The lettering is surrounded by a dotted-line box, terminated by what looks like a trident decoration, see the photograph below.



Photograph of the maker's name and the fluting, courtesy of Stephen Reed.

Studying the Oswald book (BAR14) shows very few equivalent decorations but there is a Nottingham-made pipe illustrated there which has many of the decoration characteristics of the Wimpole stem, as shown below.

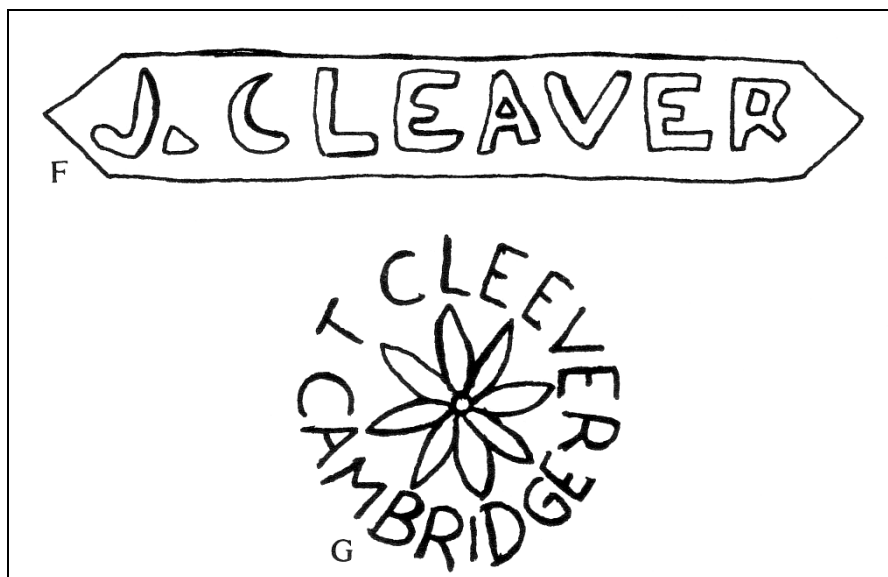


Fluted bowl clay pipe with maker's name from Nottingham (Oswald 1975).

The dotted box is present but the termination is a circle and dot character. It shows how the fluting comes down the bowl and on to the stem, just like the Wimpole stem. William Daft, the maker, was active between 1880 and 1914.

Returning to the Wimpole example, the text denoting the place of manufacture starts with what looks like one leg of the letter M. This mark almost certainly represents CAMBRIDGE and this would be logical as many clay pipes had only a very small, localised distribution.

The manufacturer's name, using the Flood book for reference, then becomes most likely to be A (for Ann) CLEEVER (or also spelt CLEAVER) as there is only one manufacturer listed for Cambridge with a letter A for the first initial and a surname beginning with C. She is listed as working in Newmarket Road in about 1864 and appears in Flood's book as using similar boxed-in marks to John Cleaver (the two spellings appear interchangeable as shown by the spelling of Thomas Cleever's name) illustrated below.



Cleaver family marks from Cambridgeshire (Flood, 1976)

The mid-19th C date for pipes manufactured by Ann Cleever fits in well with the evidence from the fluted decoration on our pipe stem, which Flood lists as being a typically 19th C feature. He also says moulded marks on the stem only occur widely after 1800. Keevill, discussing London pipes, says that fluting was first introduced in England by London manufacturers in the second half of the 18th C and slowly spread to become the first relatively common and widespread decoration by the late 18th/early 19th C.

This dating range suggests that the pipe stem may not have been associated with the demolition of Mr Ratford's house, which we believe took place in the very early 19th C. The stem was found in Trench F but lay outside the brick gable end wall and probably belongs to a later event where timber was burnt on the site of the earlier demolition.

References

Flood, RJ 1976. *Clay tobacco pipes in Cambridgeshire*, Oleander Press, Cambridge

Keevill, G 2004. *Tower of London Moat, Archaeological Excavations 1995-9*, Historic Royal Palaces Monograph No 1, Oxford.

Oswald, A 1975. *Clay pipes for the archaeologist*, BAR Brit Ser 14, Oxford

T C D Sept 2011